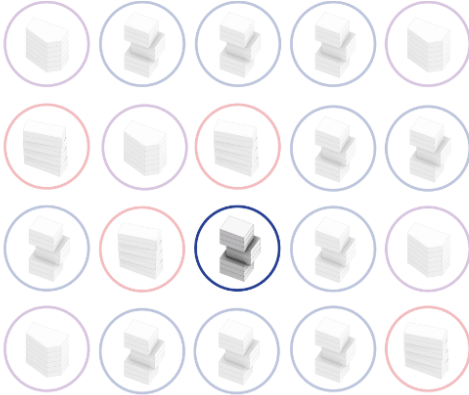


Sign in

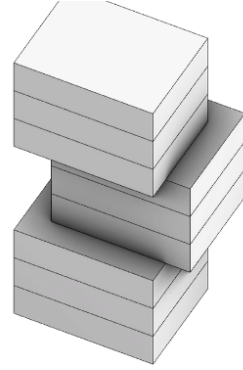
SPRING LIBRARY ACCESS >



SORT BY: LOWEST EUI

DISPLAYING 25 ITERATIONS OUT OF 1,944

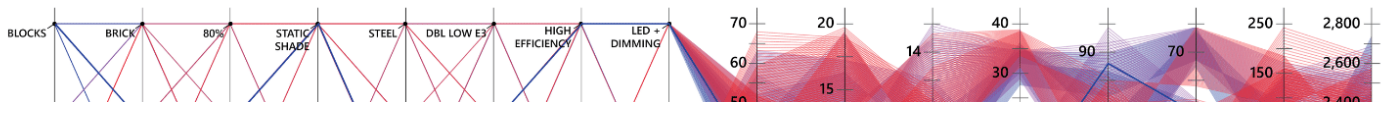
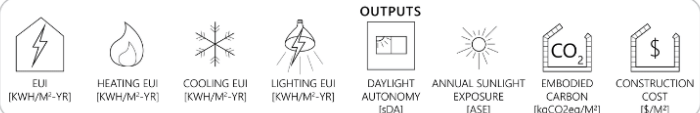
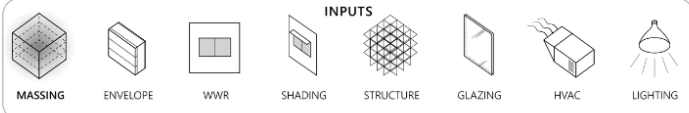
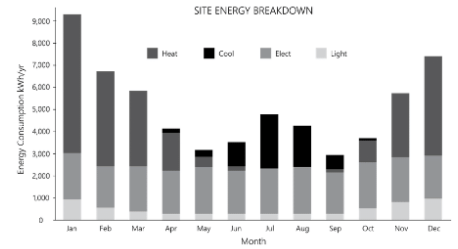
- SIPS, RSI 5.11
- WWR 50%
- STATIC SHADE
- TIMBER
- DOUBLE PANE LOW E2
- HIGH EFFICIENCY
- LED + DIMMING



Embodied Carbon: 371 tCO₂eq

Construction Cost: \$5.63 M

sDA: 85.1%
ASE: 49.7%



The tool is designed to save time and money for architects and construction teams | Photo source Environmental Systems Lab at Cornell University

Innovation > Architecture & Design > Architectural analysis tool evaluates building designs for sustainability

ARCHITECTURAL ANALYSIS TOOL EVALUATES BUILDING DESIGNS FOR SUSTAINABILITY



The software, built by researchers from Cornell University's Environmental Systems Lab, rates carbon emissions, energy use and light produced

Sign in or buy a plan to view this innovation

VIEW PLANS

SIGN IN

Download PDF